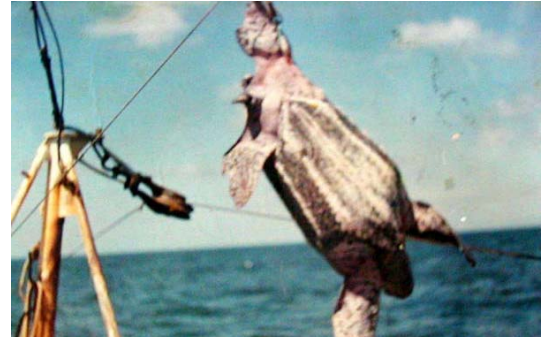


# SEA TURTLE SURVIVAL

SOLUTIONS YOU CAN IMPLEMENT . . . EVEN ON CULEBRA

**THREAT:** The National Marine Fisheries Service estimates that the U.S. offshore commercial shrimp fleet currently takes over 640 adult leatherbacks annually.

**SOLUTION:** Help promote **Turtle-Safe® Shrimp**. For more information on this campaign please visit: [www.seaturtle.org](http://www.seaturtle.org).



Karumbé Photos, 2002

Commercial trawler disposing a leatherback

**THREAT:** Lighting from shoreline developments disorients turtle hatchlings with deadly consequence.

**SOLUTION:** Support local efforts conserve areas adjacent to critical nesting beaches. Light shields are available for house and street lamps. Shields not only protect hatchlings, but also protects our ability to enjoy Culebra's spectacular night sky and bioluminescent waters. For more information on light shielding resources please visit: [www.darksky.org](http://www.darksky.org)



Karumbé Photos, 2002

Baby green sea turtle taken by fishing trash.



Photo por Chris Johnson 2002  
[www.floridaleatherbacks.com](http://www.floridaleatherbacks.com)

X-Ray of fishhook swallowed by juvenile sea turtle

**THREAT:** Plastic bags, balloons and fishing trash choke, entangle and drown sea turtles.

**SOLUTION:** Always dispose of trash properly. Please don't release helium balloons. Fishing nets and line should be cut into small pieces before disposal. When you volunteer to help with a local beach clean up, you could be saving the life of a turtle.

**THREAT:** People are poaching sea turtles on Culebra.

**SOLUTION:** Sea turtles have become symbolic of Culebra's natural heritage. Let people know that these

illegal practices threaten the patrimony of the Culebrenses as much as they threaten the future of the species. Don't purchase turtle related products such as shells, meat, oil, or eggs. Report all poaching to 787-724-5700, there is a reward for information that leads to a conviction.



Culebra kids disappointed to find bloody juvenile hawksbill shell.

**THREAT:** Although it's biodegradable, food left on the beach supports ant colonies that attack emerging hatchlings.

**SOLUTION:** Please do not leave or bury food on the beach.



Photo by Zoe Bass

Red ants devouring hatchling.

**THREAT:** Many animals associated with human populations pose a threat to turtle nests on Culebra, including dogs, cats, cattle and horses.

**SOLUTION:** Keep all livestock off turtle nesting beaches. Digging dogs should be kept away from these beaches throughout nesting season. Neutering pets is the only way to help reduce hungry stray animals that pose a threat to many species of protected wildlife. Talk with the Veterinarian who visits on the second Wednesday of every month across from Joe Ice near Ferriteria Minimas.

**THREAT:** Leatherbacks and other turtles are vulnerable to boat collisions and strikes in shallow waters.

**SOLUTION:** Please boat slowly and responsibly in Culebra's coastal waters.



Photo by Matthew Godfrey

Loggerhead taken by boat collision.



Photo by Abbie White

Tinglitos incinerated by campfire on Playa Zoni.

**THREAT:** Campfires on nesting beaches have incinerated turtle nests.

**SOLUTION:** Please, no campfires on nesting beaches.

**THREAT:** The use of off road vehicles on turtle nesting beaches reduces hatchling success.

**SOLUTION:** Please do not drive on turtle nesting beaches.

**THREAT:** Sea turtle conservation projects are work-intensive and under-funded.

**SOLUTION: VOLUNTEER to HELP:**

**1- 877- 772- 6725**  
[www.coralations.org](http://www.coralations.org)